

COVID-19 Testing Criteria, Risk Categorisation, De-isolation and Bed Allocation Guideline



Western Health

COVID - 19

Be Safe – Be Smart – Be Kind

Section 1. COVID-19 Testing Criteria, Isolation, De-isolation, and Surveillance

High risk exposure / Quarantine definition

Any of the following in the last 7 days

- face to face contact > 1 hour or
- household contact
- or room contact > 4 hours

COVID-19 testing

COVID-19 PCR

Rapid PCR

- On suspicion of COVID-19 infection.
- High-risk exposure whilst inpatient or within 7 days of presenting for admission

Fast Track PCR

- Day 7 clearance test for Inpatient in quarantine
- All ward contacts of an outbreak every 48 hours until 2 consecutive rounds of no new cases amongst those not quarantined

Routine PCR

- Suspected cases not meeting above criteria

RAT tests

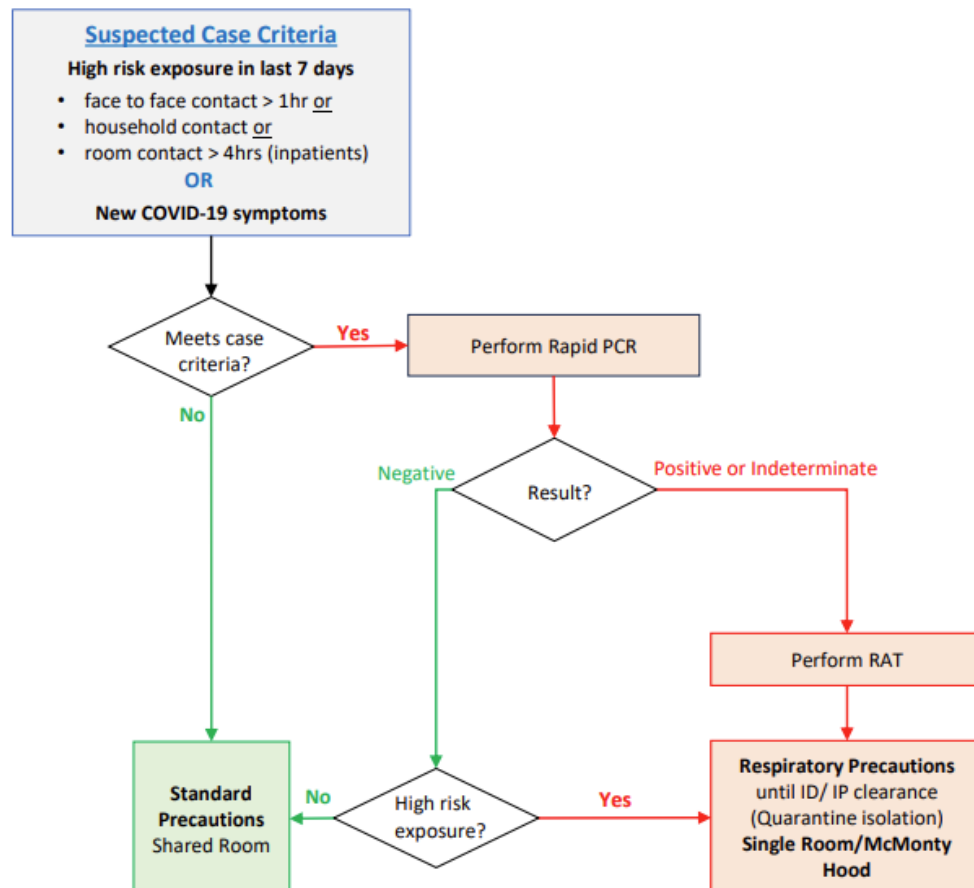
- PCR positive on admission
- As directed by ID IP/AMS registrar as part of clearance procedures
- 2nd daily for the first 7 days after recovery from COVID-19 having received antiviral therapy
- RAT testing on day 0 and 2 of admissions during periods of high community transmission when activated from Infectious Diseases recommendations

Transmission based precautions

- Respiratory precautions are required for all suspected cases and quarantined patients.
- Clearance criteria to cease Respiratory precautions are:
 - Suspected cases
 - Negative PCR with clearance by treating Team and resolving alert
 - Quarantine
 - Negative PCR 7 days from last exposure, with clearance by treating Team and resolving alert
 - Positive or Indeterminate PCR
 - Clearance by ID IP/AMS Registrar
- **Recovered cases who received antiviral therapy should be cohorted for the first 7 days following clearance.**

Admission Pathway

WH COVID-19 Testing Criteria, Isolation and Deisolation Algorithm



Section 2. COVID-19 Patient Bed Allocation

Refer to standard and transmission-based precautions procedure.

Section 3. Ward Prioritisation of McMonty Hoods

Refer to standard and transmission-based precautions procedure.

[Western Health Standard and Transmission Based Precautions](#)

Section 4. COVID-19 clearance criteria for Confirmed and Quarantined Patients

Confirmed case at least 7 days after onset of illness/ first positive PCR

- Non – immunocompromised - negative RAT test

- Immunocompromised – negative RAT + Expert opinion

Positive PCR/ negative RAT on admission

- PCR Ct value low $<< 30$ – suggests new infection
repeat RAT in 48 hours, if positive then clearance criteria as per confirmed case

- PCR Ct value not $<< 30$

 - Clearance if Ct value > 30 on repeat PCR

 - Clearance as per confirmed case if repeat PCR indicates new infection

Rebound case

- Negative RAT test