

# COVID-19 Contact Tracing Workflows



Western Health

COVID - 19

Be Safe -- Be Smart -- Be Kind

The following document provides a high level overview of the current Western Health Workflows for COVID-19 Contact Tracing.

<b>CONTENTS</b> .....	<b>1</b>
<b>OVERVIEW</b> .....	<b>1</b>
<b>WORKFLOWS</b> .....	<b>2</b>
Notification of outcome of COVID-19 exposure employee contact tracing .....	2
Staff member is identified as a close or casual contact .....	3
WH Covid-19 internal and external reporting and communication .....	4

## OVERVIEW

Contact tracing is a method of rapidly identifying and isolating individuals who have been exposed to a COVID-19 positive case during their infectious period when adequate precautions were not undertaken.

Contact tracing identifies patients, staff and visitors who have had close contact, as per the DHHS definition, with the index case (first known case) from 48 hours prior to symptoms up until droplet and contact precautions were instigated.

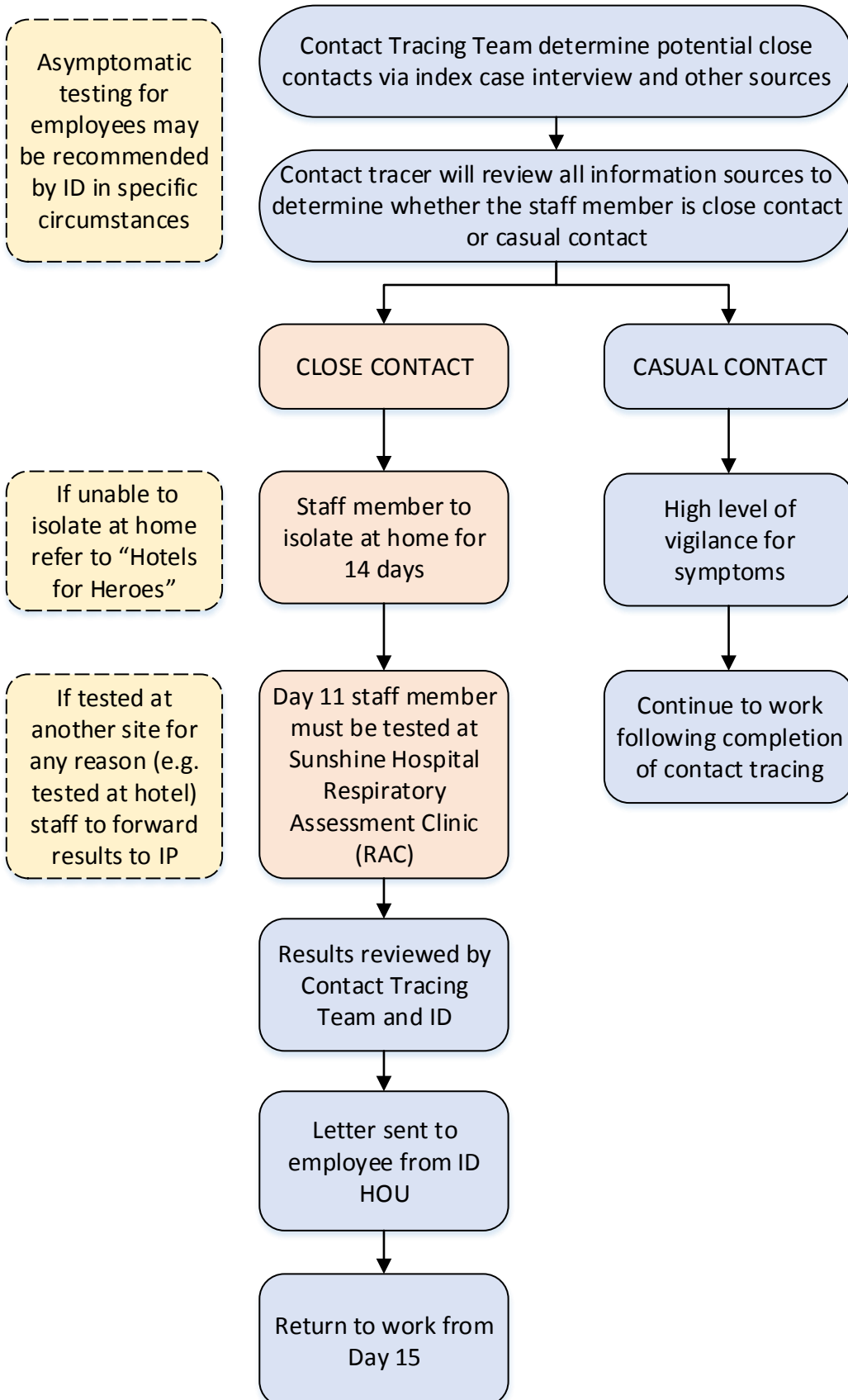
Contact tracing is undertaken because individuals who meet the close contact definition are considered at risk of developing COVID-19 and infecting others whilst asymptomatic. Through identification and isolation of close contacts the risk of COVID-19 transmission is minimised and a prompt medical review can be initiated if the close contact becomes symptomatic.

Contact tracing staff make recommendations to all close contacts in relation to their need to isolate, seek testing and/ or medical evaluation.

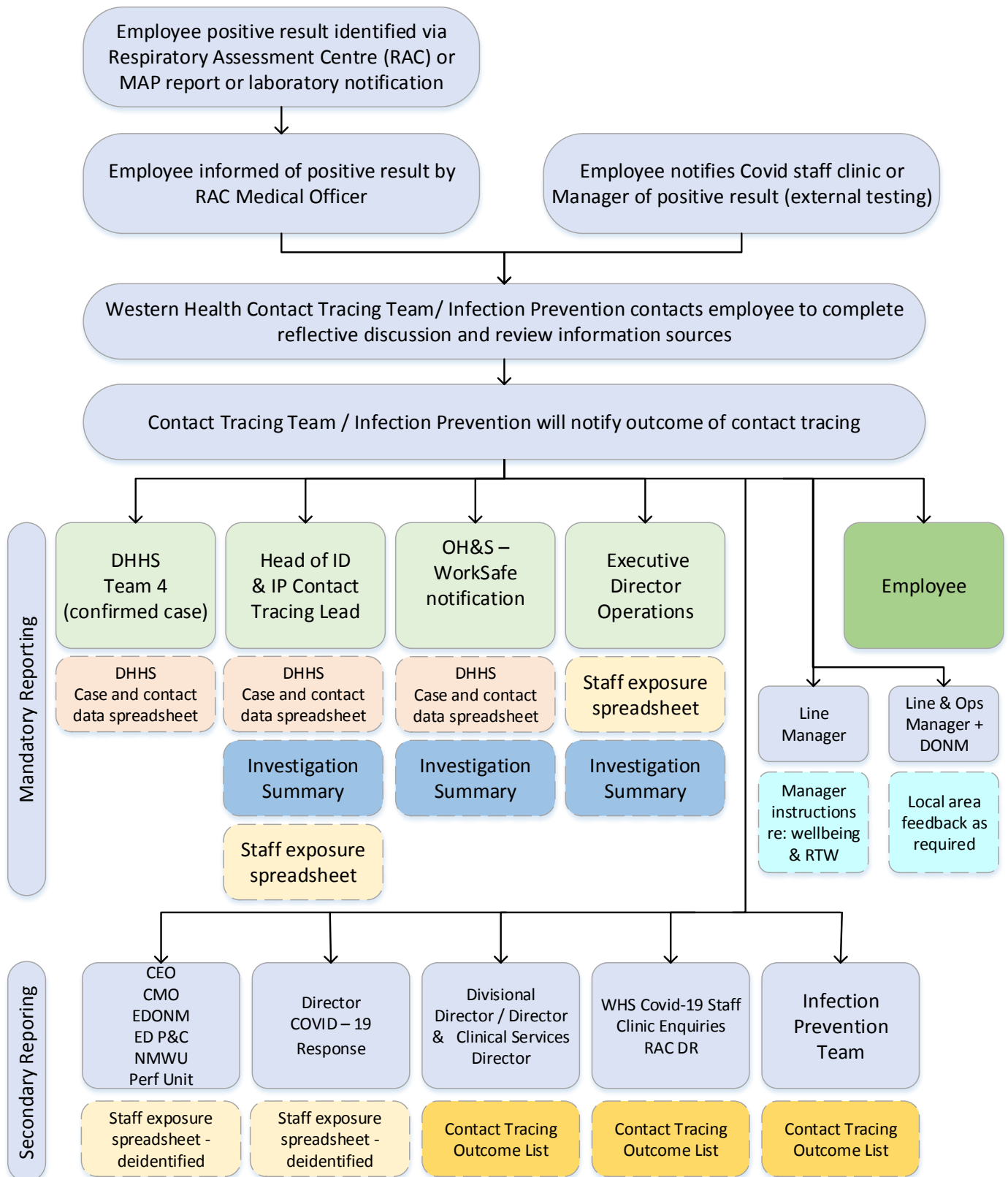
This document should be should be read in conjunction with the following resources:

- QRG: Contact Tracing Close vs Casual Contact Matrix
- QRG: Manager Advice Regarding Contact Tracing Process

## Employee Identified As A Close Or Casual Contact



# Notification Of Outcome Of COVID-19 Exposure Employee Contact Tracing



## CT/IP/ID Daily Reporting And Communication Flowchart

